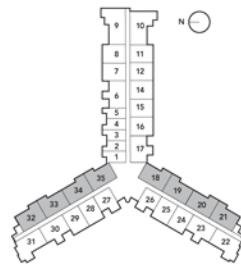




THE NEW
HARBOUR HOUSE
BAL HARBOUR



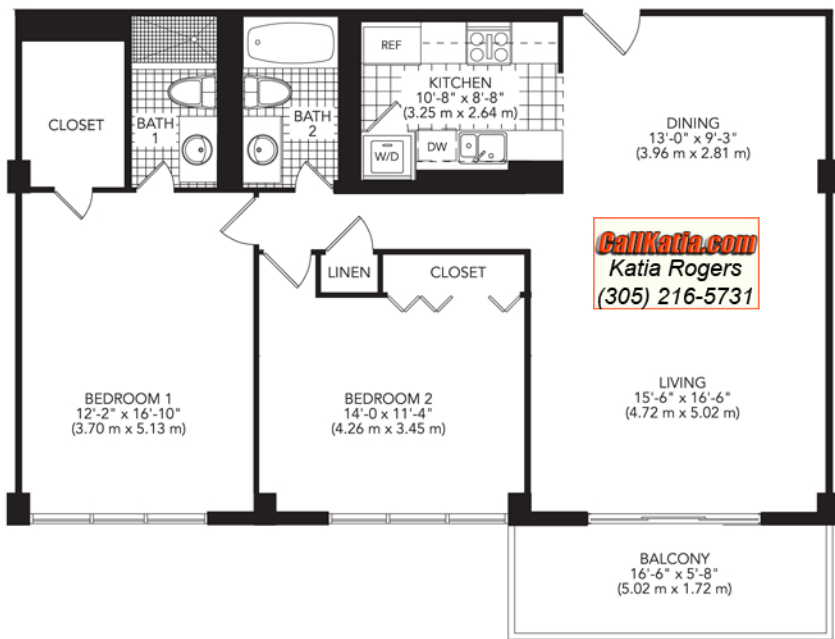
KEY PLAN
Lines 19, 21, 33 & 35
18, 20, 32, 34 (Rev)

B

2 bedroom - 2 bath

unit 1,153 s.f.
balcony 208 s.f.

total 1,361 s.f.



STATED DIMENSIONS ARE MEASURED TO THE EXTERIOR BOUNDARIES OF THE EXTERIOR WALLS AND THE CENTERLINE OF THE INTERIOR PARTITION WALLS AND IN FACT MAY VARY FROM THE DIMENSIONS THAT WOULD BE DETERMINED BY USING THE DESCRIPTION AND DEFINITION OF THE "UNIT" SET FORTH IN THE DECLARATION (WHICH GENERALLY ONLY INCLUDES THE INTERIOR AIRSPACE BETWEEN THE PERIMETER WALLS AND EXCLUDES INTERIOR STRUCTURAL COMPONENTS). ALL DIMENSIONS ARE APPROXIMATE AND SUBJECT TO CHANGE IN ACCORDANCE WITH THE AGREEMENT FOR SALE.